

EVACUATION PROCEDURE

Evacuation procedure

- Dial '000' to ensure Fire Service response
- Follow all instructions given by the Wardens or Fire Officers
- Leave immediately by the nearest safe exit
- Move quickly, do not run
- If possible, close doors behind you
- Report to your designated assembly area
- Do not leave the assembly area until the Chief Warden or Fire Service gives the 'all-clear'
- If any injuries are sustained notify a Warden
- Advise a Warden immediately if you are aware of people not accounted for

In case of FIRE or SMOKE

RACE procedure

REMOVE people from immediate danger

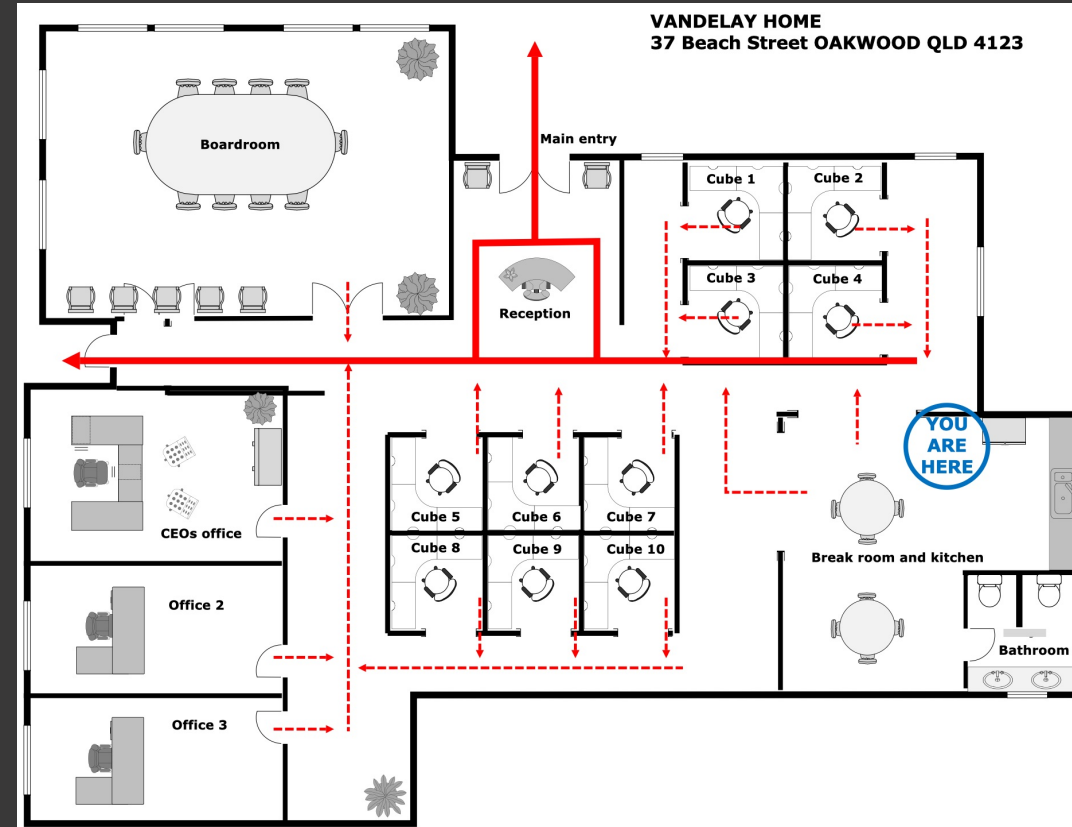
ALERT others by activating alarm

CONTAIN by closing doors and windows if possible

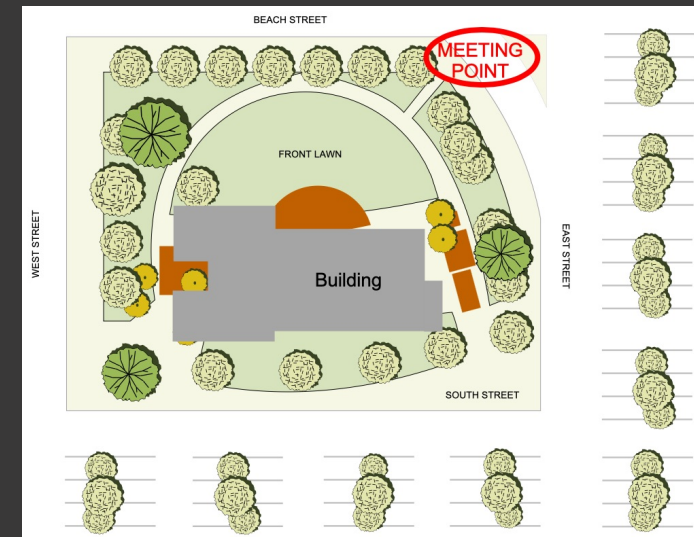
EVACUATE extinguish if trained to do so, exit the building

Mobility impaired persons

Mobility impaired persons should evacuate immediately on hearing the fire alarm, assisted by a nominated person.



Vandelay Home



ASSEMBLY POINT
Grassed footpath area on the corner of East St and Beach St